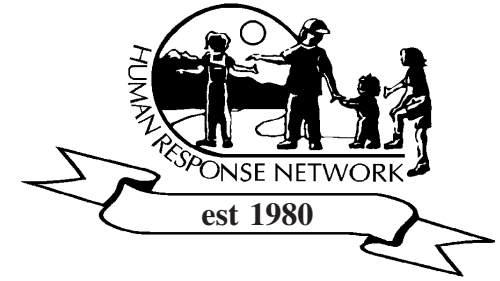
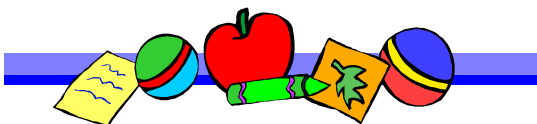
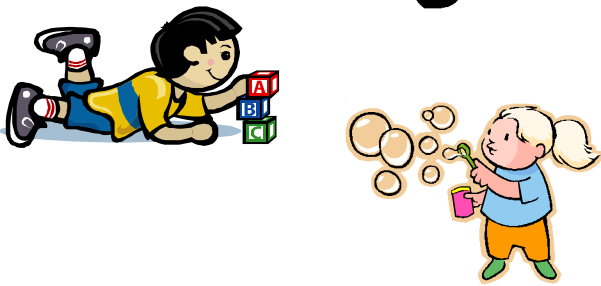
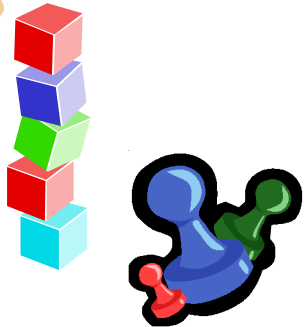
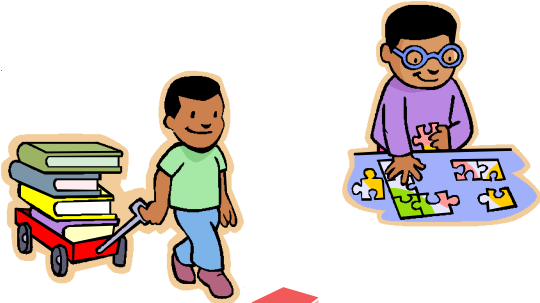
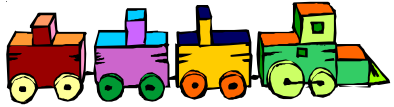


If you have any specific items you'd like to see in our Lending Library, please let us know.



LENDING LIBRARY



Funded by:
The California Department of Education
Child Development Division

P.O. Box 2370
111 Mountain View Street
Weaverville
(530) 623-2024/Fax: 623-6343
1-800-358-5251
www.humanresponsenetwork.org

The Lending Library is open at no cost to parents, child care professionals, teachers, and anyone who provides care for young children.

Materials available include children's books, parenting books, teacher resource books and videos, activity boxes, puzzles, games, computer software and toys.

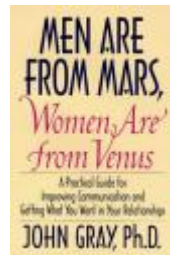


**LIBRARY HOURS
WEAVERVILLE
MONDAY - FRIDAY
8:00 A.M. - 5:00 P.M.
623-2024**



LIBRARY SECTION TITLES

- ❖ Child Development
- ❖ Curriculum
- ❖ Pregnancy/Adoption
- ❖ Health & Safety
- ❖ Special Needs
- ❖ Parenting/Discipline
- ❖ Drug Addiction
- ❖ Domestic Violence
- ❖ Sexual Assault
- ❖ Grief/Death
- ❖ Relationships
- ❖ Family/Children Videos & DVD's
- ❖ Games & Toys



LOAN PERIOD AND LIMITATIONS

Videos are on loan for one week. Toys are on loan for a maximum of two weeks. Books are on loan for three weeks.

No more than three items can be borrowed each time per household.



Donations to the Lending Library are always welcome. Donated items must be in good shape, have all their pieces and be appropriate for families. Movie ratings of "G", "PG" or "PG13" only.